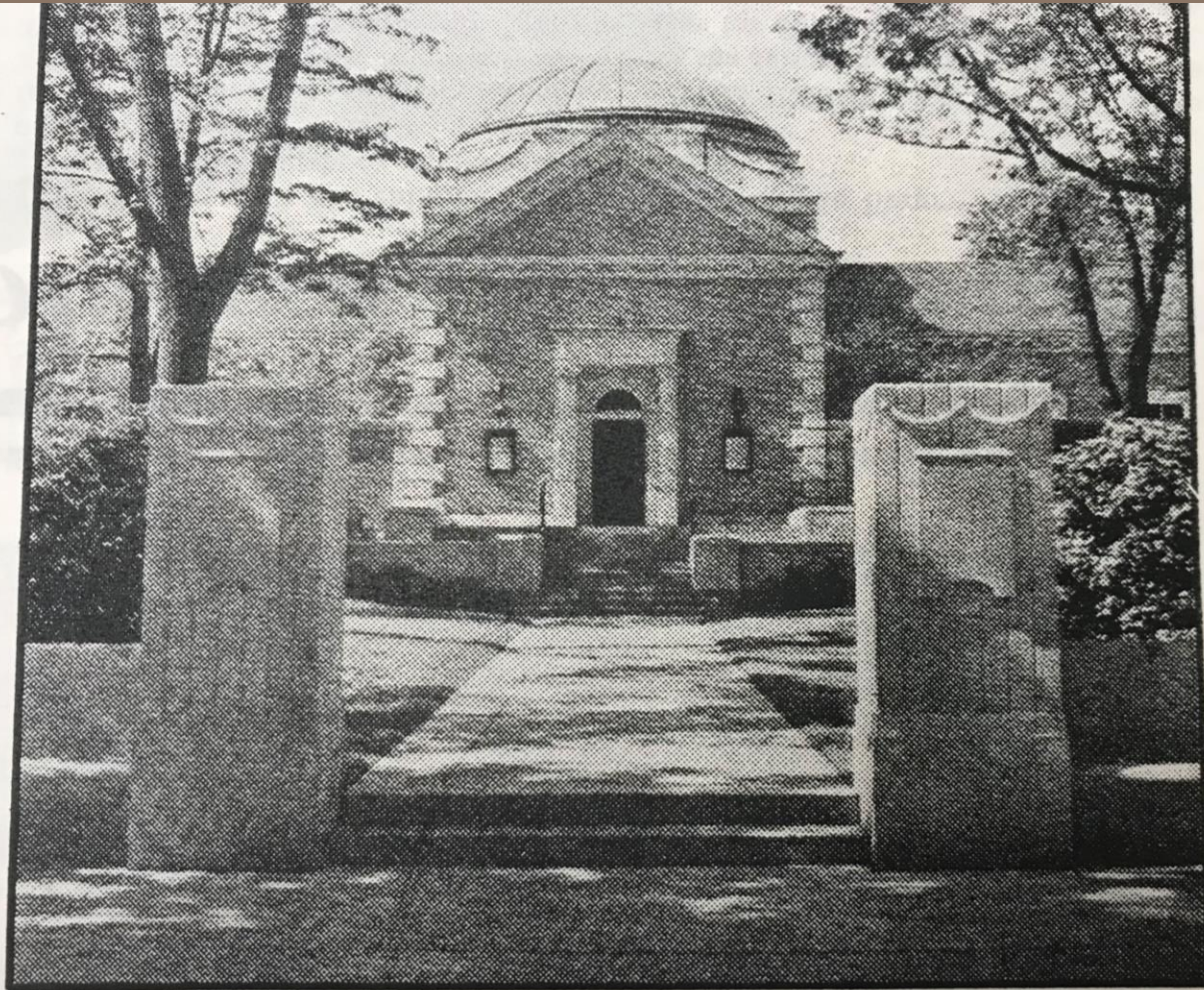


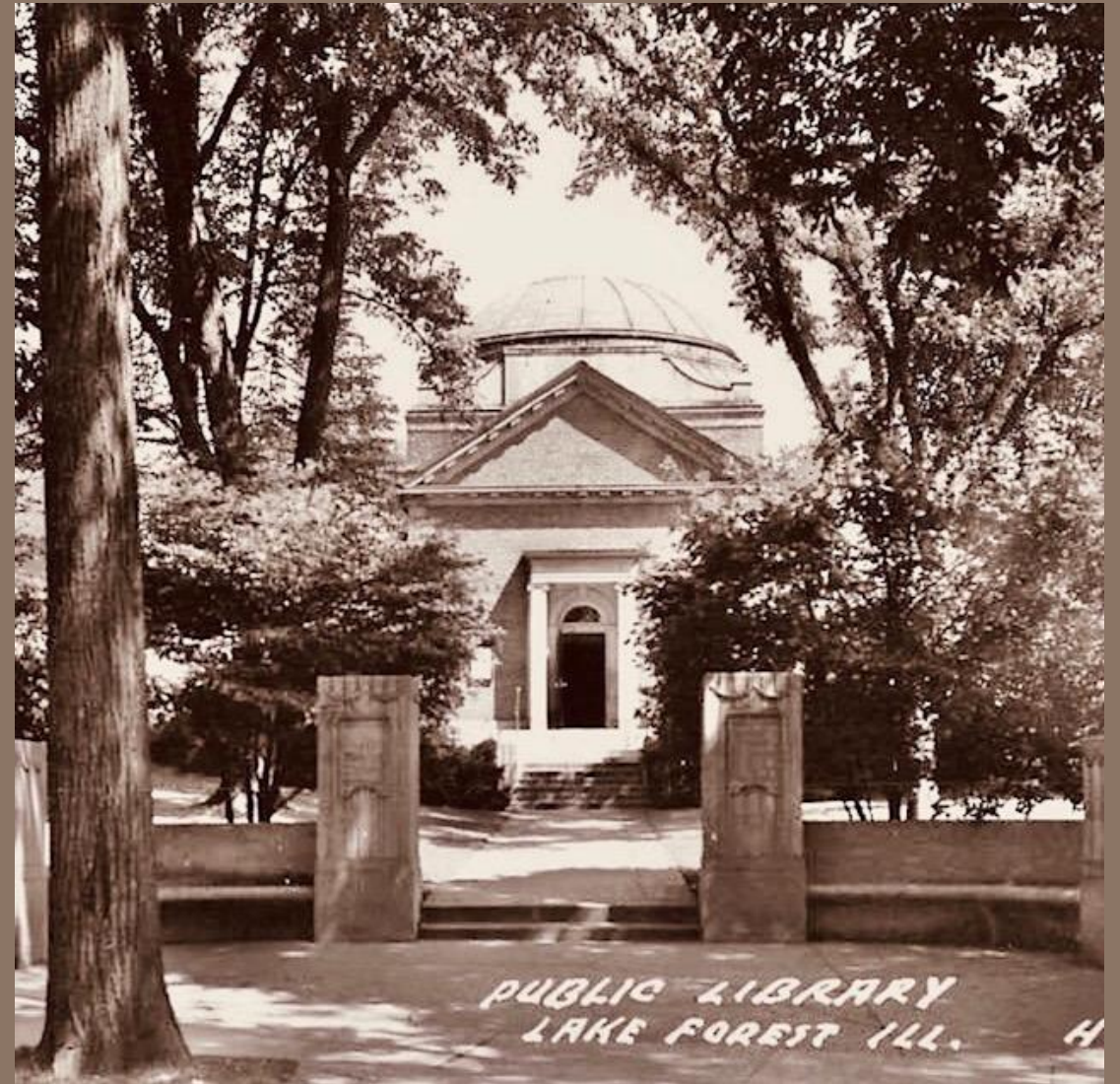


**Condition Assessment of Excedra
[Curved Bench] at Deerpath Road**

By Rommy Lopat
To Lake Forest Library Board
October 11, 2022



The Lake Forest Public Library, as it looked when it was dedicated in the 1930s.



Left: Entry in the 1930's Right: Probably 1940's judging from growth of Hawthorns

January 19, 1984

Lake Forester

with news of Lake Bluff

repair job costs \$107,000



The Lake Forest Library at 360 E. Deerpath was constructed in 1931. The original landmark structure is topped with a lead-coated copper dome above the book circulation area. (File photo)



Clockwise from Left:
1984 – note closed
entrance; 2022 –
building not visible;
2020 proposed
rendering by HGA





March 2012 photo by R Lopat. Note newly-planted Magnolias in garden dedicated post-1994 to “Bette Jo Pedersen” & two large trees (at center) removed since 2012. Two trees have been added to parkway at west; one new parkway tree planted east of Excedra.



OVERALL VIEW OF LIBRARY

**Think like a photographer...or a visiting pedestrian.
What do you see?**

- Building and Dome no longer visible due to Hawthorn branches
- Visual clutter in view (ie 3 pieces of Croydon sculpture; Lannon stone steps and irregular steppers; sculpture and hosta at front door)
- Colorful flowerpots obscure classic architectural pillars (Plaques say “The Lake Forest Library”)
- Excedra is 3-4’ off center



DISCOLORATION + DETERIORATION OF LIMESTONE BASES ON 3 OUT OF 4 PILLARS DUE TO STORMWATER EROSION



Lots of expansion joint lines going in all different directions in the view above. At right, the sidewalk to nowhere—leads to Deerpath but mostly to the berm across the street.





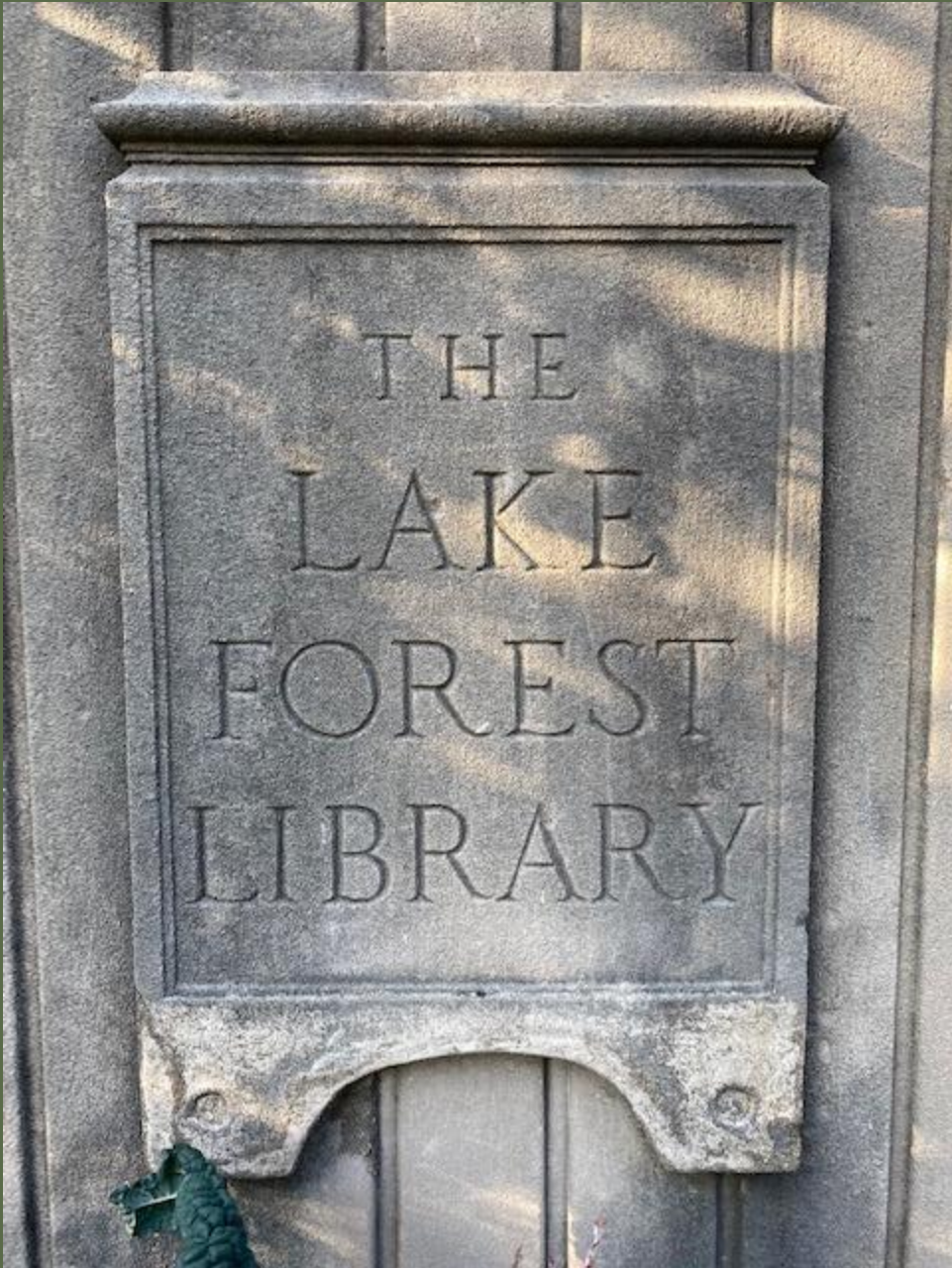
Where is the centerline? How do we align (or fool the eye) the sidewalk, the entrance posts, and the Library's front door? Sidewalk leads to...nowhere.

Remove / relocate extraneous elements (ie expansion joints; flower pots) from the picture OR add visual diversions (Create central medallion in terrace? Use one large-scale flowerpot in center?)





LAND- AND HARD-SCAPE REQUIRE REBALANCING
Re-contour of beds, pruning of low branches, removal of yews,
addition of large-scale limestone steps to match architecture



RECOMMENDATIONS

EASY FIXES

- Limb up and thin Hawthorn; thin Magnolias
- Move trash receptacle to west sidewalk
- Move flower pots to outer pillars
- Remove yew bushes behind Excedra (needs discussion)
- Clean limestone / concrete with D2 Cleaner (after consultation) or powerwash

NOT EASY BUT NECESSARY

- Relocate Croydon “books” outside of view
- Hire preservation architect to assess pillar foundations; map alignment / topography of Excedra to front door; provide estimates of fixing foundations and masonry
- Hire landscape company to design improved gardens; reconfigure terrace and center steps; assess symmetry of vegetation; offer options for hillside treatment to front door.
- Undertake Landscape Analysis of entire property. Set goals.

QUESTIONS?
Thank you, Library Board



