

SECTION 00 91 03

ADDENDUM 3

PART 1 GENERAL

1.1 NOTICE TO BIDDERS

- A. This Addendum is published pursuant to the Instructions to Bidders and Conditions of the Contract. This Addendum serves to clarify, revise, and supersede information in the Project Manual and Drawings. Portions of the Addendum affecting the Contract Documents will be incorporated into the Contract by enumeration of the Addendum in the Owner/Contractor Agreement.
- B. The Bidder shall acknowledge receipt of this Addendum in the appropriate space on the Bid Form.
- C. The deadline for receipts of bids is unchanged by this addendum and remains Friday, October 7, 2022, at 3:00 p.m.

1.2 ATTACHMENTS

- A. SK-2.
- B. 2017 photographs, for reference.

1.3 PHOTOGRAPHS

- A. Recently received information indicates that 2x4 wood blocking is embedded within the existing gypsum deck of the dome below each batten. This blocking has deteriorated and needs shall be removed as part of the project. Refer to SK-2, attached, in revision of detail 3/A501.
- B. Photographs of the dome taken in June 2017 have recently become available. The following views are provided for reference by all Bidders.

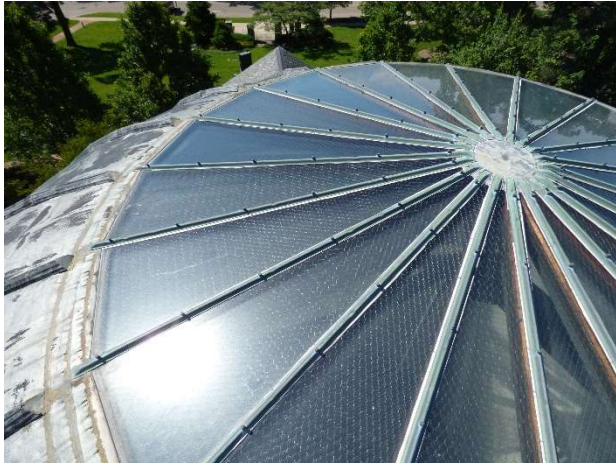


Figure 1. Overview of skylight



Figure 2. Detail at peak of skylight.

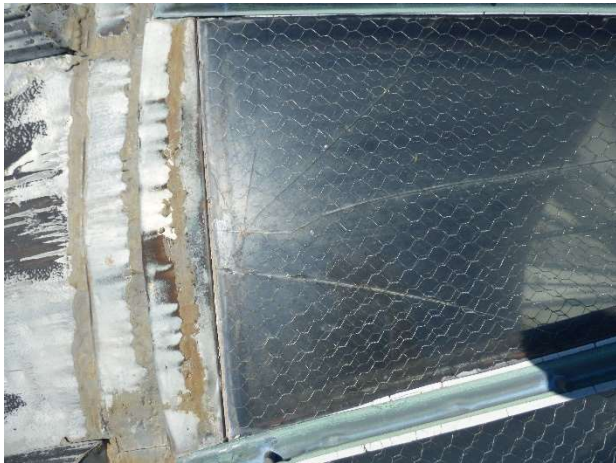


Figure 3. Detail of typical cracked pane of glass.



Figure 4. Detail of stop securing skylight glazing.



Figure 5. Detail of base of skylight.



Figure 6. Detail of cornice and transition flashing at base of dome.



Figure 7. Detail of transition flashing at base of dome.



Figure 8. View of gutter at lowest watertable.



Figure 9. View of gutter at lowest watertable.



Figure 10. View of gutter at lowest watertable.



Figure 11. View from the northwest.



Figure 12. View from the northeast.



Figure 13. View from the southwest.



Figure 14. View from the southeast.

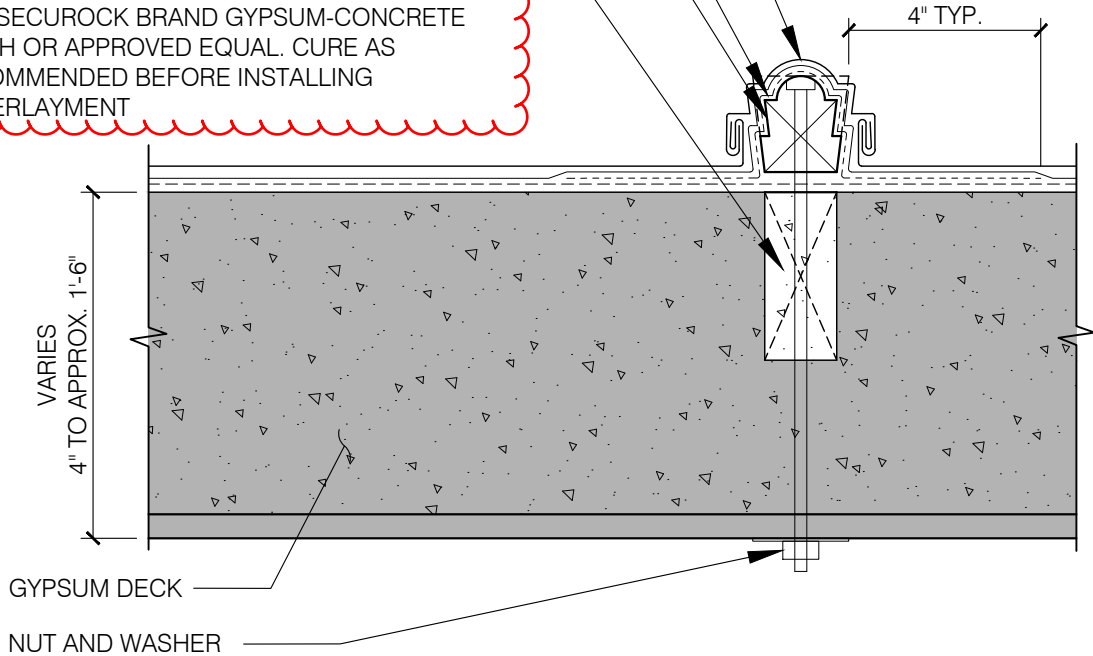
END OF ADDENDUM 3

COATED COPPER BATTEN CAP.
MATCH ORIGINAL PROFILE.

SECOND PLY OF UNDERLAYMENT
WRAPPED OVER BATTEN

2x2 NON-TREATED WOOD BATTEN, TYP., MILLED
TO MATCH ORIGINAL BATTEN PROFILE AND SCORED
ON REVERSE AS NEEDED TO FIT CURVATURE OF
DOME. THRU-BOLT TO EXISTING GYPSUM DECK OR
SCREW TO EXISTING WOOD DECK.

EXISTING 2x4 BLOCKING UNDER EXISTING
BATTEN. REMOVE ALL WOOD AND FILL VOID WITH
USG SECUROCK BRAND GYPSUM-CONCRETE
PATCH OR APPROVED EQUAL. CURE AS
RECOMMENDED BEFORE INSTALLING
UNDERLAYMENT



Wiss, Janney, Elstner Associates, Inc.
330 Pfingsten Road
Northbrook, Illinois 60062
847.272.7400 tel | 847.480.9534 fax
www.wje.com

Project
Lake Forest Library Dome Roof Replacement
360 Deerpath Road, Lake Forest, IL 60045

Batten Profile
Ref. Detail 3/A501

Proj. No. 2021.5121
Date September 30, 2022
Drawn TMP
Checked KMI
Scale 3" = 1'-0"

Sheet No.

SK-2